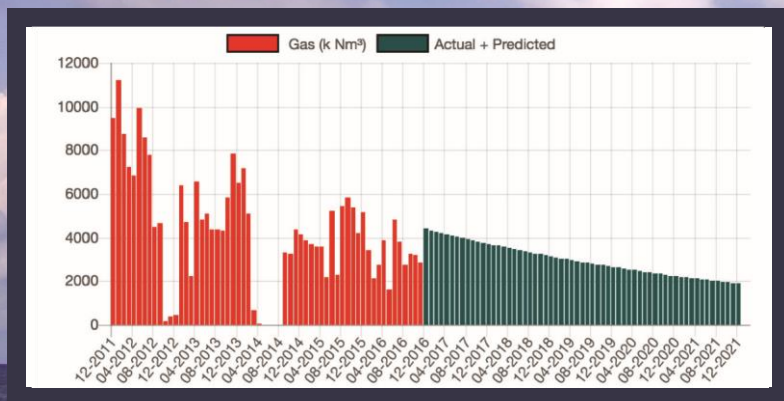


www.oilandgasdataservices.com

Providing the most comprehensive data service for the Global Oil and Gas industry.

125 Countries
58,000 Fields
165,000 Facilities
25,000 Licenses
3,800,000 Wells







Cor Leonis Consultancy B.V. launches a new data service for the Global Oil and Gas industry at www.oilandgasdataservices.com

It involves a fit-for-purpose, easy-to-use web-application which combines a powerful charting-interface with an extensive downloadable database. The database contains a wealth of relevant attributes on Global Oil and Gas Fields, Licenses, Wells, Facilities and Pipelines and their relationships.

125

COUNTRIES

~ 58,000

OIL AND GAS FIELDS

~ 3,800,000

WELLS

~ 25,000

LICENSES

~ 165,000

FACILITIES

~ 150,000

PIPELINES

~ 21,500

PARTNERS

Monthly

PRODUCTION HISTORY
PER FIELD



Data includes information on full (monthly) production-history and details on joint venture partners and their interest percentages. A sample of data-availability is provided below.

								
Oil and Gas fields	✓	✓	✓	✓	✓	✓	✓	✓
Wells	✓	✓	✓	✓	✓	✓	✓	✓
Facilities	✓	✓	✓	✓			✓	✓
Pipelines	✓	✓	✓	✓				
License areas	✓	✓	✓	✓	✓	✓	✓	
Production History	✓	✓	✓	✓	✓	✓	✓	
Field Partner interests	✓	✓	✓	✓	✓	✓	✓	✓

Data is sourced from reputable sources, such as official governmental- and industry-bodies and is obtained through proprietary research. It is maintained on a monthly basis, incorporating latest information such as new wells, monthly production-history and changes in shareholdings. Per producing field a proprietary algorithm establishes a production-forecast based on a sophisticated decline curve analysis of the historical monthly production-history.

'PGNiG to buy all assets of INEOS E&P Norge'

'Neo Energy to acquire Zennor Petroleum'

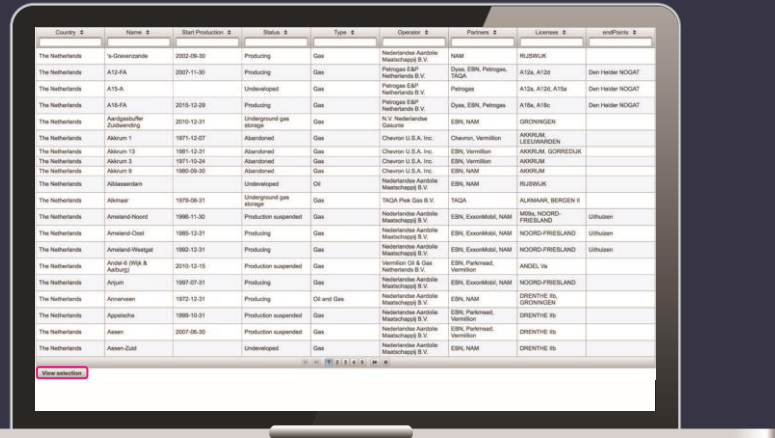
'InterOil acquires five exploitation licenses in Argentina from ROCH S.A.'

'Talos Energy buys Gulf of Mexico assets from Castex'

Recent News-headlines suggest active portfolio management in the Global Oil and Gas industry. The robust and comprehensive data from [oilandgasdataservices.com](https://www.oilandgasdataservices.com) provides you with the competitive edge to adequately assess and value these opportunities and their commercial context.

Selection screen

An easy-to-use selection panel allows for quick selection on relevant criteria, such as field-name, partners and Operator, which can be represented in a comprehensive map via [View selection](#)



Country	Name	Start Production	Status	Type	Operator	Partner	Licensing	inP/Part
The Netherlands	v-Groenendaal	2002-08-20	Producing	Gas	Nederlandse Aardolie Maatschappij B.V.	NAM	NOORD	NOORD
The Netherlands	AT3-FA	2007-11-20	Producing	Gas	Petropag E&P Netherlands B.V.	Dyna, EBN, Petropag, TAGA	AT3a, AT3b	Den Helder NOG&T
The Netherlands	AT3-A	2010-12-20	Producing	Gas	Petropag E&P Netherlands B.V.	Dyna, EBN, Petropag	AT3a, AT3b	Den Helder NOG&T
The Netherlands	Aardgaslocatie Zuidwending	2010-12-31	Underground gas storage	Gas	N.V. Westlandse Gasunie	EBN, NAM	GRONINGEN	
The Netherlands	Akikon 1	1971-12-07	Abandoned	Gas	Chevron U.S.A., Inc.	Chevron, Vermilion	NOORD	LESLINGEN
The Netherlands	Akikon 13	1981-12-31	Abandoned	Gas	Chevron U.S.A., Inc.	EBN, Vermilion	NOORD	AKORUM, GORREBEEK
The Netherlands	Akikon 3	1971-12-24	Abandoned	Gas	Chevron U.S.A., Inc.	EBN, Vermilion	NOORD	AKORUM
The Netherlands	Akikon 9	1980-09-30	Abandoned	Gas	Chevron U.S.A., Inc.	EBN, NAM	NOORD	AKORUM
The Netherlands	Albassardam		Underground gas storage	Oil	Nederlandse Aardolie Maatschappij B.V.	EBN, NAM	NOORD	NOORD
The Netherlands	Amstel	1979-08-21	Producing	Gas	TSCG P&G Gas B.V.	TSCG	ALDAMME, BERGEM II	
The Netherlands	Amstelveen-Noord	1986-11-20	Production suspended	Gas	Nederlandse Aardolie Maatschappij B.V.	EBN, ExxonMobil, NAM	NOORD-FRIESLAND	Utilization
The Netherlands	Amstelveen-Oost	1985-12-31	Producing	Gas	Nederlandse Aardolie Maatschappij B.V.	EBN, ExxonMobil, NAM	NOORD-FRIESLAND	Utilization
The Netherlands	Amstelveen-Westgat	1980-12-31	Producing	Gas	Nederlandse Aardolie Maatschappij B.V.	EBN, ExxonMobil, NAM	NOORD-FRIESLAND	Utilization
The Netherlands	Antar II (O&A Auburg)	2010-12-15	Production suspended	Gas	Vermilion Oil & Gas Netherlands B.V.	EBN, Pharmed, Vermilion	ANDOL Va	
The Netherlands	Argum	1987-07-31	Producing	Gas	Nederlandse Aardolie Maatschappij B.V.	EBN, ExxonMobil, NAM	NOORD-FRIESLAND	
The Netherlands	Arnonveen	1972-12-31	Producing	Oil and Gas	Nederlandse Aardolie Maatschappij B.V.	EBN, NAM	DRENTHE II	GRONINGEN
The Netherlands	Appelsha	1989-10-31	Production suspended	Gas	Nederlandse Aardolie Maatschappij B.V.	EBN, Pharmed, Vermilion	DRENTHE II	
The Netherlands	Assen	2007-08-20	Production suspended	Gas	Nederlandse Aardolie Maatschappij B.V.	EBN, Pharmed, Vermilion	DRENTHE II	
The Netherlands	Assen-Zuid		Underdeveloped	Gas	Nederlandse Aardolie Maatschappij B.V.	EBN, NAM	DRENTHE II	

To return to the main selection screen, select [Change selection](#)

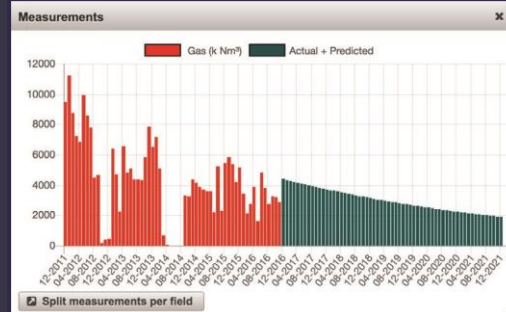


Field representation

The map reflects relevant information on the selected fields, including the license-area, pipeline-connections, platforms and wells. Individually selecting specific fields will unlock more field/well/facility-attributes.

Double-clicking on the annual production-chart will reveal the monthly historical and forecasted production-data.

Field	
Search	
's-Gravenzande	
Related	Type
'S-GRAVENZANDE-01	Well
'S-GRAVENZANDE-01-SIDETRACK1	Well
'S-GRAVENZANDE-02	Well
's-Gravenzande	Facility



Details field:K14-FA	
Partner	Percentage
Wintershall Noordzee B.V.	3.6%
Nederlandse Aardolie Maatschappij B.V.	45.6%
EBN B.V.	40%
Oranje-Nassau Energie B.V.	0.85%
Tulow Exploration & Production Netherlands B.V.	9.95%
Property	value
LEG_STATUS	Gas.2
Discovery Year	1970
Field Status	producing
Operator	Nederlandse Aardolie Maatschappij B.V.
Discovery Well	K14-01
Land_sea	sea
License area	K14-1, K14a-2

Field	
Search	
K14-FA	
Related	Type
K14-FA-105-SIDETRACK1	Well
K14-FA-105	Well
K14-FA-105-SIDETRACK2	Well
K14-01	Well
K14-FA-107	Well
K14-FA-107-SIDETRACK1	Well
K14-FA-106	Well
K14-FA-106-SIDETRACK2	Well
K14-FA-106-SIDETRACK1	Well
K14-FA-104	Well

Details well:K14-FA-105-SIDETRACK1	
Property	value
Spud date	25-08-1976
Latitude WGS84	53.268737
Latitude ED50	53.269500
Wellbore depth TVD	823.330000
Wellbore Result code	FLR
End date	01-09-1978
Wellbore form	Gedeeveerd
Y Rijksdriehoek	588347
Wellbore Result Description	Technisch mislukt
Well number	BK140131
Well depth TVD against NAP/MSL	795.150000
Wellbore indicator	K14-FA-105-S1
Well depth AH against NAP/MSL	824.920000
Y UTM31_ED50	5802560.000000
Latitude Provided	53.2695



The robust and comprehensive source of data at www.oilandgasdataservices.com provides you with the competitive edge to adequately evaluate Global Oil and Gas assets and their commercial context. It is available on an annual subscription-fee basis, subject to the General Terms & Conditions. Subscribers are allowed full access to the database and will benefit from monthly updates. Upon request once-off datasets may be requested.

More information or a request for a demo-account can be obtained via info@corleonis.nl